

# MaxView®

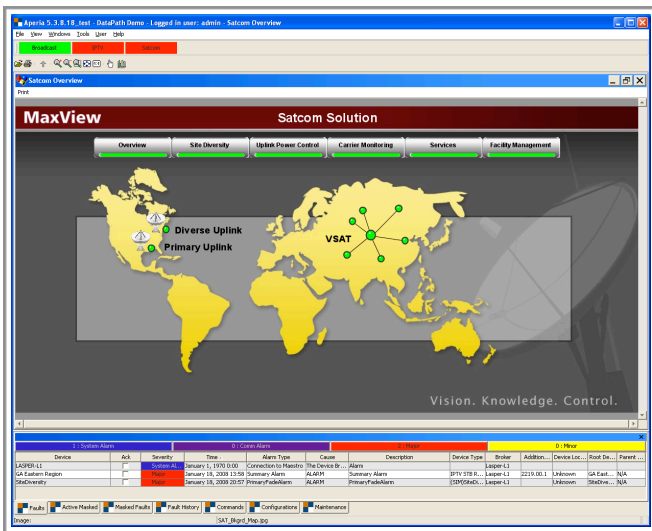
Vision. Knowledge. Control.



## MaxView for Satellite

### Monitor and Control Satellite Networks

Satellite earth station monitor and control (M&C) software has typically done little more than report on, and remotely control, ground station equipment operations. Now, however, emerging service delivery methods utilize satellite networks in conjunction with broadcast, fiber, cable and wireless networks, expanding the control an operator needs to ensure service uptime.



Intercontinental Site Alarm Correlation

### MaxView – An Agent of Change

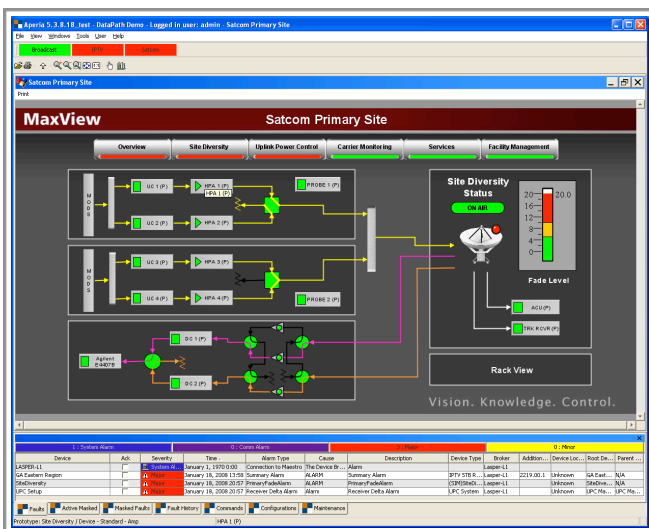
A single network control system increases operations' efficiency and network uptime by layering advanced functionality on top of basic M&C capabilities, empowering staff to:

- Immediately detect and isolate service failures
- Automate outage recovery
- Schedule satellite transmissions
- Provision dynamic circuits or services
- Centralize control of remote facilities
- Automate carrier monitoring and spectrum management

### Total Control Adapts to Your Changing Requirements

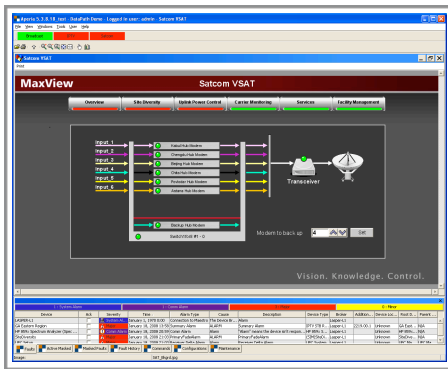
Designed to quickly and easily expand as your network changes, these MaxView for Satellite solutions help you “future-proof” your operations:

- Satellite M&C
- Web-based graphical control
- Automated network operations
- Transmission scheduling
- Carrier monitoring
- Circuit provisioning
- Alarm correlation

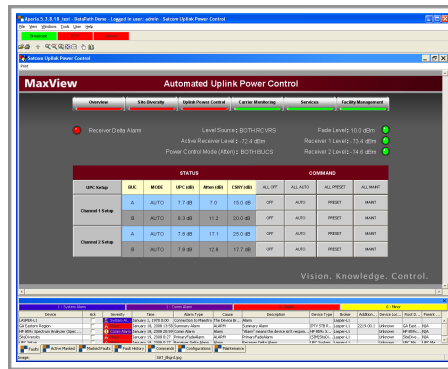


Site Diversity

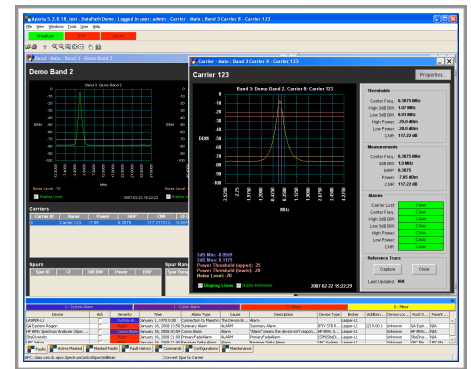
| ISSUE                                   | MAXVIEW SOLUTION   |
|---|--|
| Satellite earth station M&C             | <ul style="list-style-type: none"> <li>Monitor and control old and new satellite equipment: antennas, HPAs, transceivers, receivers, up converters, down converters, modems, video modulators, switches and more from one screen.</li> </ul> |
| M&C for hybrid satellite networks       | <ul style="list-style-type: none"> <li>Monitor and control hybrid networks of satellite and terrestrial equipment including broadcast, satellite, IP network and telecom equipment from one screen.</li> </ul>                               |
| Spectrum monitoring, carrier monitoring | <ul style="list-style-type: none"> <li>React instantly to problems with carriers and ghost intruders using integrated spectrum analyzer-based RF spectrum monitoring.</li> </ul>   |



VSAT Management



Uplink Power Control



Carrier Monitoring

| ISSUE  | MAXVIEW SOLUTION   |
|--|--|
| Uplink Power Control (UPC)                         | <ul style="list-style-type: none"> <li>Monitors the power requirements and automatically adjusts power to counter signal degradation due to rain fade. This keeps the signal intact while eliminating the risk of human error.</li> </ul>                        |
| Site Diversity                                     | <ul style="list-style-type: none"> <li>Create automated failover for primary to back-up ingest facilities, local-collection or NOC's.</li> <li>MaxView will initiate start-up of back facilities and transfer services without disruption of service.</li> </ul> |
| Auto-discovery for rapid new equipment integration | <ul style="list-style-type: none"> <li>Auto-discover new equipment.</li> <li>Create screens on-line.</li> <li>Develop and deploy new drivers quickly.</li> </ul>   |
| Remote Facilities Management                       | <ul style="list-style-type: none"> <li>Monitor, control and automate unmanned remote uplink sites</li> <li>Manage the environmental systems in remote collection sites from the NOC.</li> </ul>  |